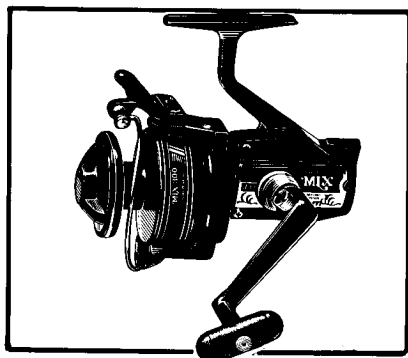
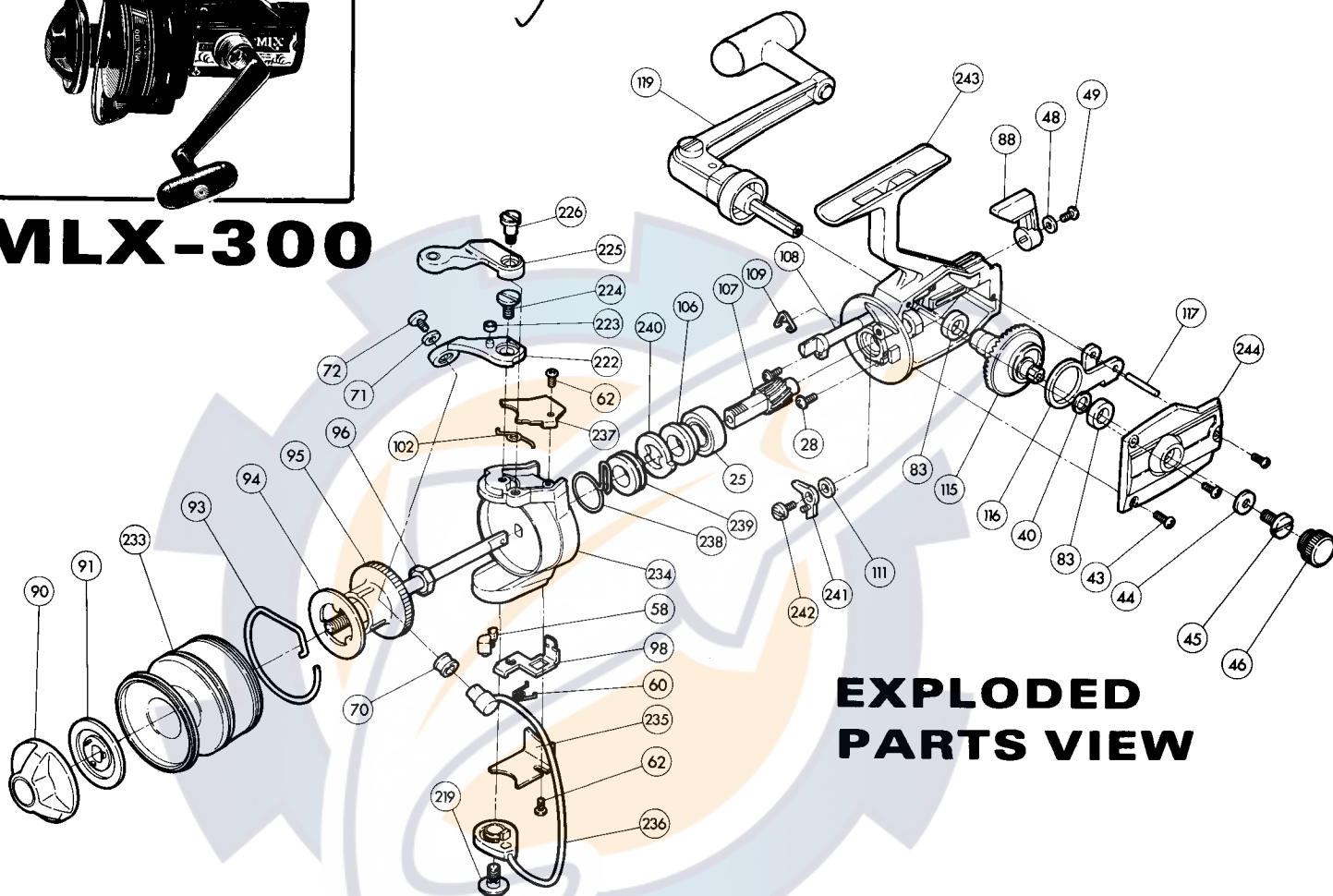


REPAIR MANUAL SHEET MLX-300

Shimano American Corporation, 205 Jefferson Road
Parsippany, N.J. 07054



MLX-300



EXPLODED PARTS VIEW

PARTS LIST

PART#	DESCRIPTION	PRICE	PART#	DESCRIPTION	PRICE	PART#	DESCRIPTION	PRICE
25	Ball bearing	5.00	91	Drag disk	.50	223	Trigger pin roller	.15
28	Bearing retainer screw	.15	93	Click spring	.50	224	Bail mount screw	.35
40	Drive gear spacer (optional)	.15	94	Base drag disk	.15	225	Fast cast trigger	2.00
43	Side plate screw	.15	95	Spindle	1.75	226	Trigger screw	.25
44	Lock washer	.15	96	Rotor nut	.25	233	Spool shell	12.00
45	Handle screw	.15	98	Trip plate	.75	234	Rotor	4.75
46	Dust cap	.25	102	Bail spring	.25	235	Trip lever cover	.25
48	Anti reverse lever lock wash.	.15	106	Anti reverse ratchet spacer	.45	236	Bail wire	2.00
49	Anti reverse lever screw	.15	107	Pinion gear	2.00	237	Bail spring cover	.45
58	Trip plate cam	.25	108	Anti reverse shaft	.50	238	Rotor stop spring	.35
60	Trip plate spring	.25	109	Anti reverse shaft spring	.15	239	Stop spring arbor	.45
62	Cover screw	.25	111	Anti reverse dog spacer	.15	240	Self center ratchet	.60
70	Roller line guide	.50	115	Drive gear	1.00	241	Anti reverse dog	.50
71	Lock washer	.15	116	Oscillation guide	.35	242	Anti reverse dog screw	.65
72	Bail wire screw	.25	117	Oscillation guide pin	.15	243	Housing	6.50
83	Drive gear bushing	.45	119	Handle	6.00	244	Side plate	3.25
88	Anti reverse lever	.25	219	Bail wire screw	.45			
90	Drag adjusting knob	1.25	222	Bail mount	1.50			

Prices and specifications subject to change without notice.

Mar. 6 '81